

HOTEL  
PERLA  
LOS ANGELES

EVENT SPACES



Situated in the heart of Downtown Los Angeles, Hotel Per La is inspired by the building in which it's housed. Originally the Bank of Italy, a historic 12-story building on the corner of Olive and 7th Street, the space is a symbol of inclusion and accomplishment. Per La is an inspired name that translates to "For The" in Italian, a nod to the buildings storied beginning as a bank for the people. Its founder, Amadeo Giannini believed in the dignity and abilities of those commonly overlooked. In essence, our name means: "For the people of Los Angeles".

Hotel Per La is a study in translating luxury, the meaning it takes depending on taste. A playfully warm confluence of classical sensibilities and local inspiration brings this new vision of refinement to life. The 241 beautifully appointed guest rooms and suites are set in a residential feel, taking inspiration from California and Italy. The room's soft color palette is drawn from the lobby's fully restored, gold and blue Italianate ceiling. All rooms feature custom furnishings and Bellino linens, an extensive curated art program and many offer pedestal bathtubs. Grand public spaces for guests and locals alike include options for to-go and all-day dining with the stunning rooftop pool and bar offering sweeping skyline views. There is more than 10,000-square feet of event space available for gatherings of all sizes.

**ROOFTOP**

- Pool
- Bar Clara

**SUITES**

**2<sup>ND</sup> FLOOR**

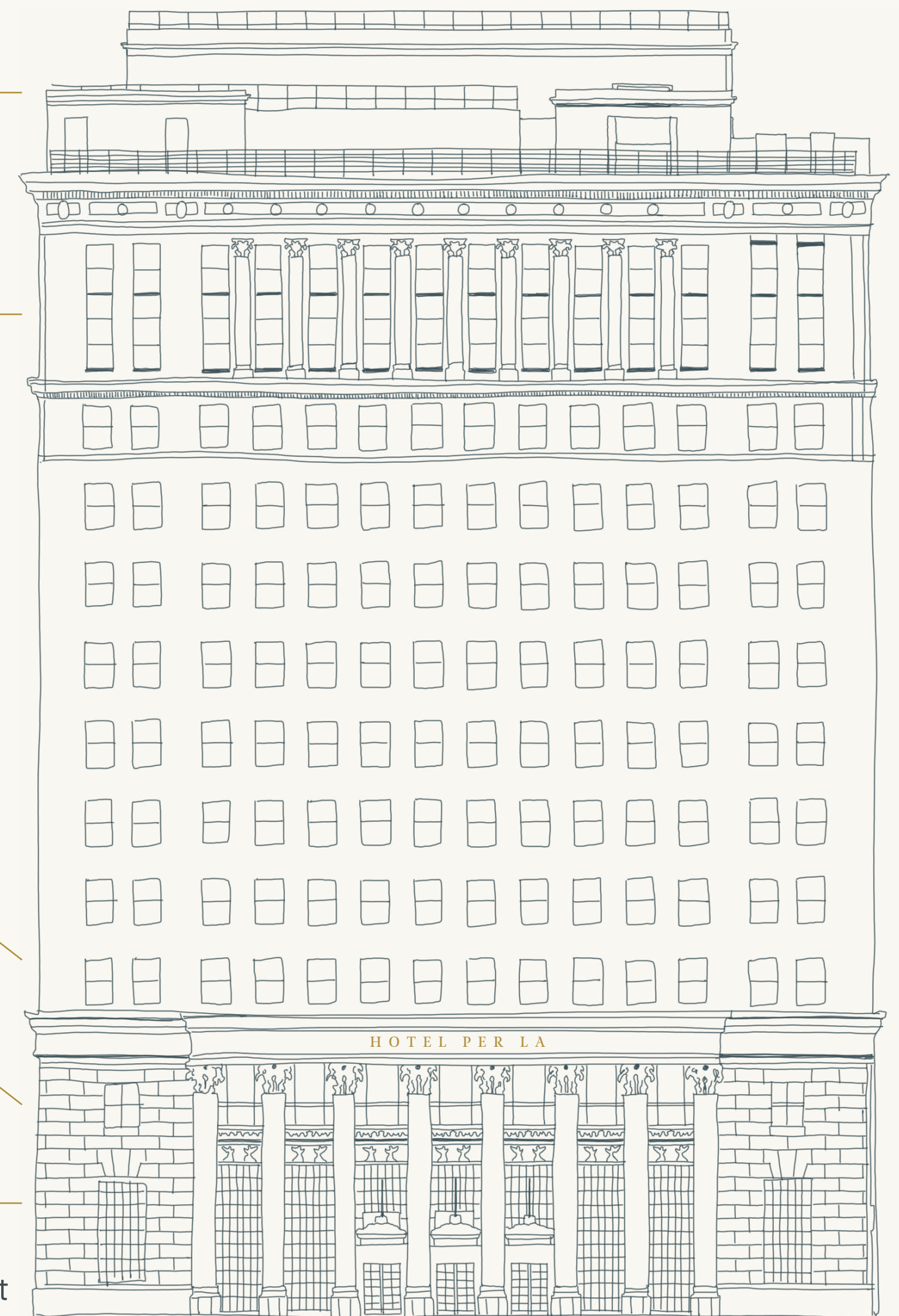
- The Courtyard

**MEZZANINE**

- The Mezz
- Hoffman Room
- Monnette Room

**LOBBY**

- Café Ora
- Per L'Ora Restaurant
- The Parlour

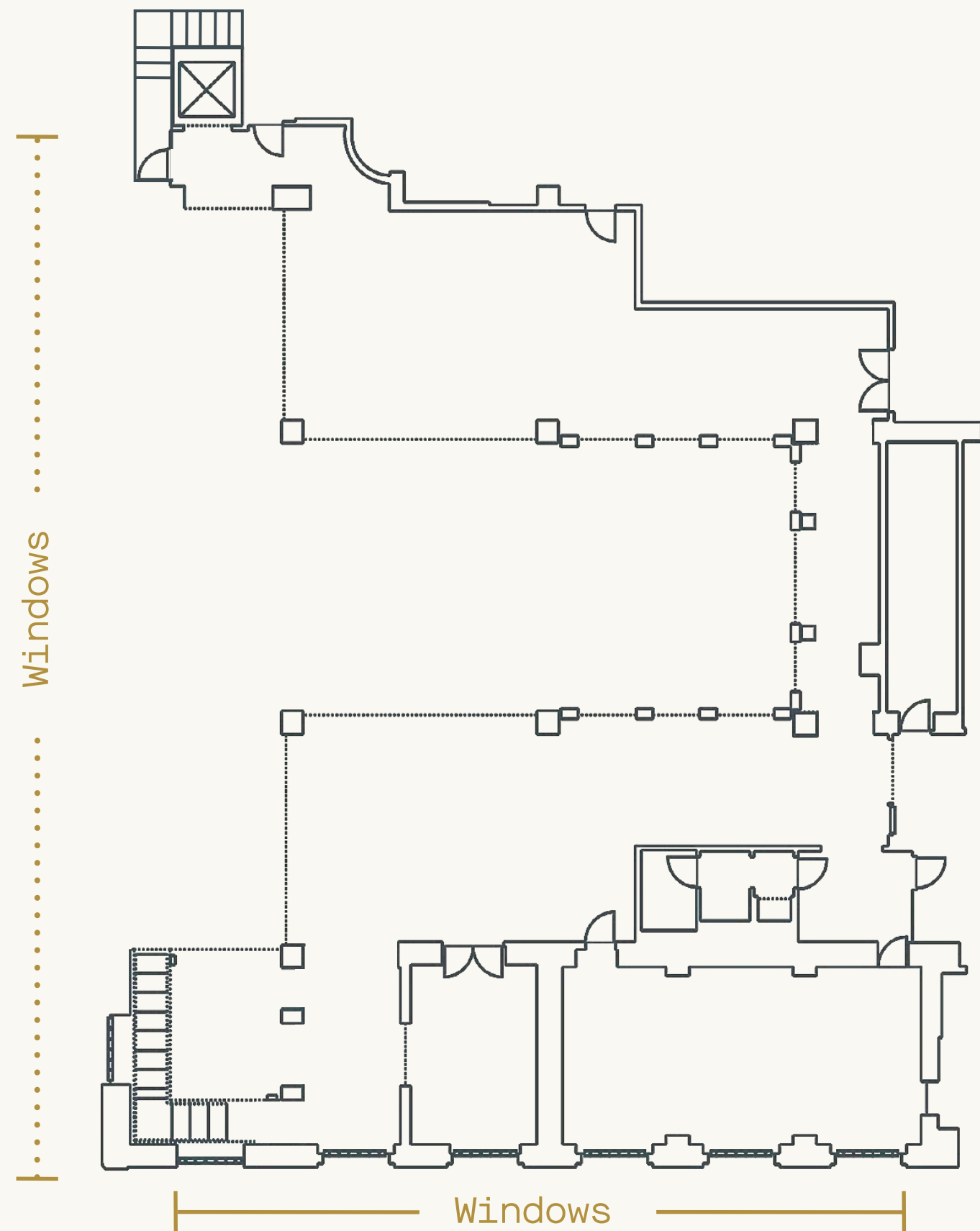




# Mezzanine

An enclave atop Per L'Ora restaurant; the main 2,800 sq. ft. event space, which can be divided in two separate spaces, offers a vibrant and open ambiance. The iconic Italianate ceiling creates a picturesque setting for celebrations of all kinds.

[Virtual Tour](#)



2,864 sq. ft.

RECEPTION // 225

BANQUET // 160

CEILING HEIGHT // 8'4"

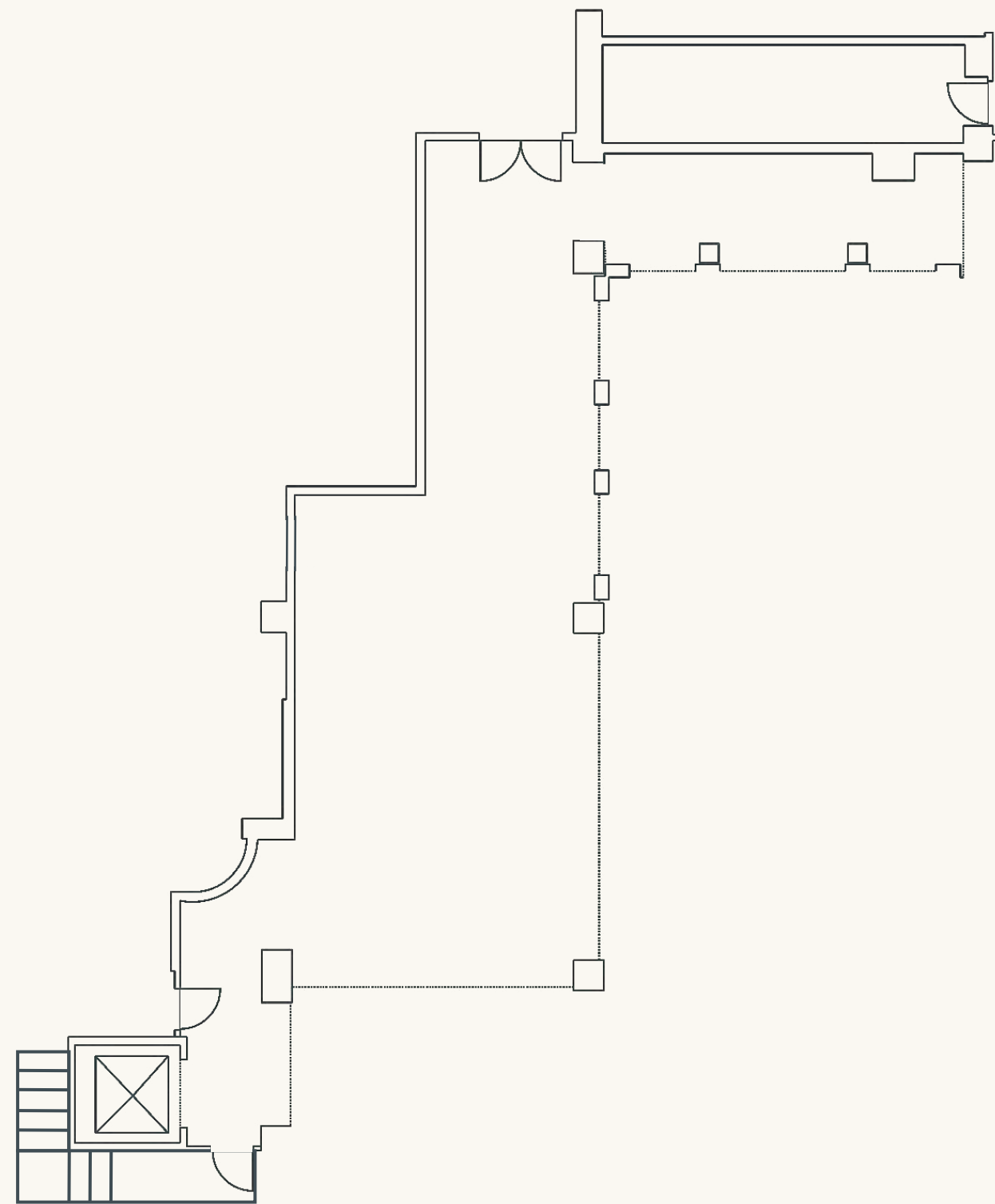




# Mezzanine West

Vintage and elegant, the West side of Mezzanine can accommodate up to 75.

[Virtual Tour](#)



913 sq. ft.

RECEPTION // 75    BANQUET // 58    THEATER // 65    CLASSROOM // 36  
CONFERENCE // 28    U-SHAPED // 24    CEILING HEIGHT // 8'4"

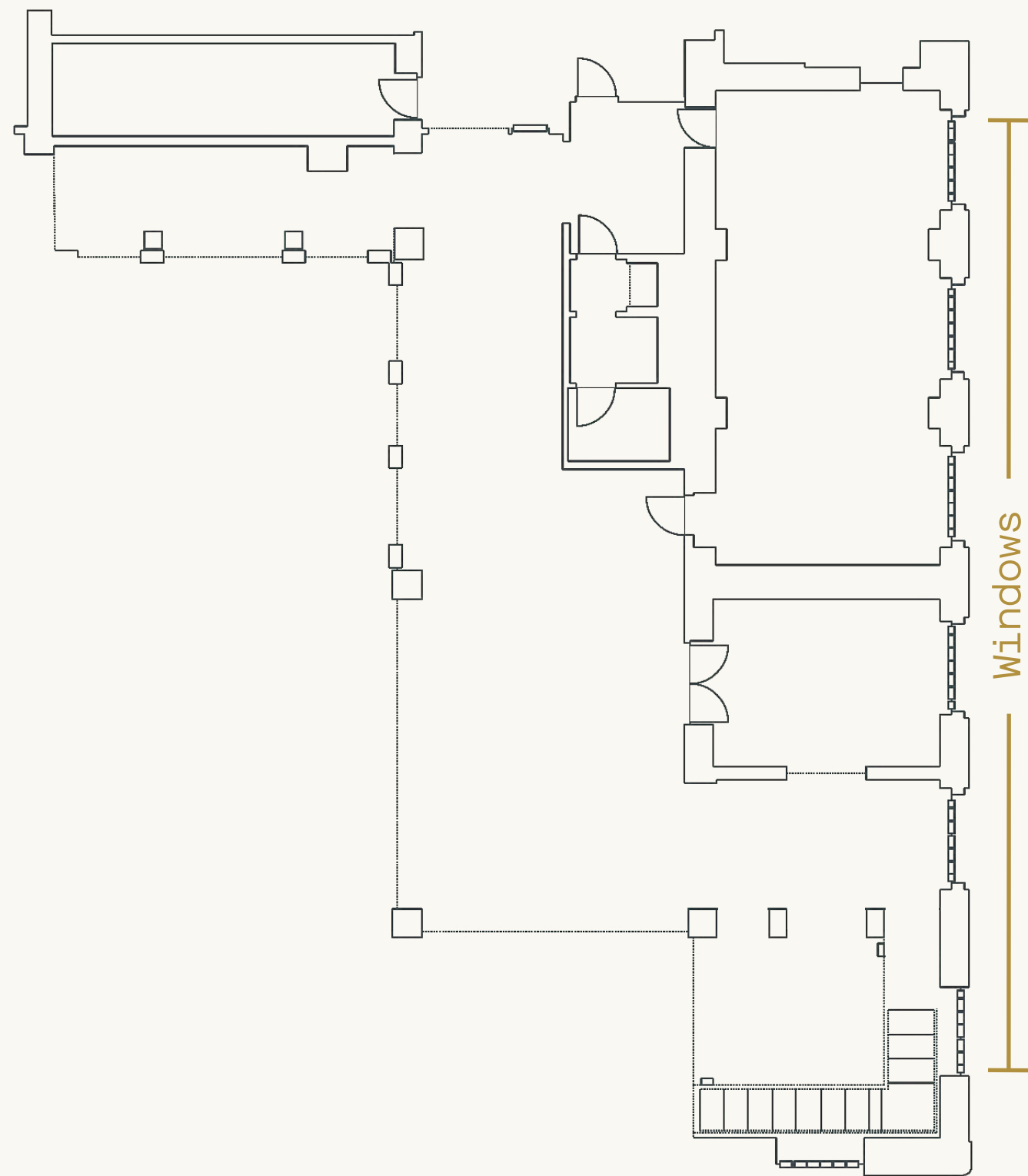




## Mezzanine East

Mezzanine East, Hoffman & Monette - an open design concept for your next gathering. These three spaces can be perfectly configured for meal functions, meetings, or cocktail receptions.

[Virtual Tour](#)



1,763 sq. ft.

RECEPTION // 150

BANQUET // 108

THEATER // 65

CLASSROOM // 36

CONFERENCE // 28

U-SHAPED // 24

CEILING HEIGHT // 8'4"

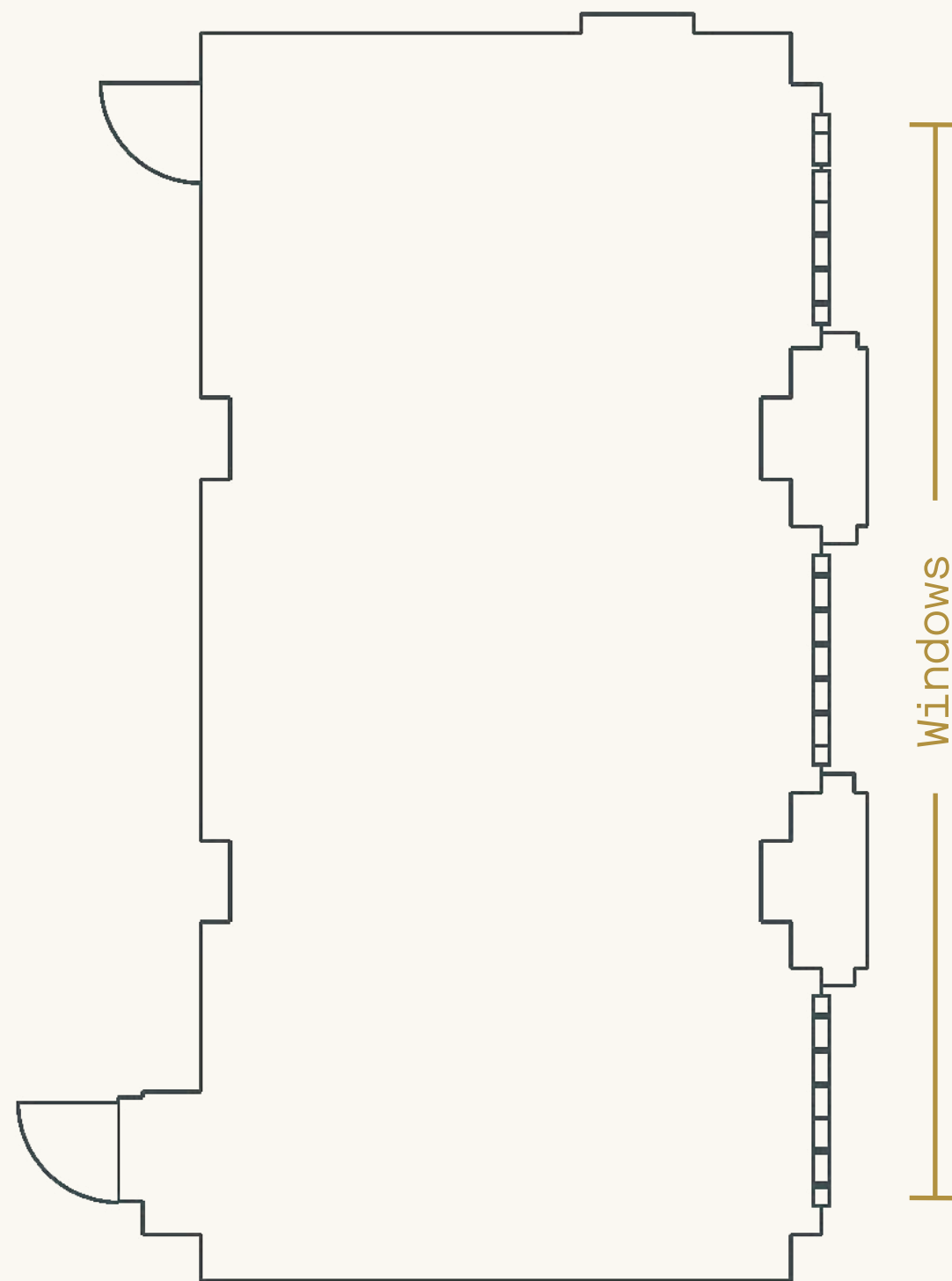




# The Hoffman Room

From meetings to dinners and cocktail receptions, Hoffman is a versatile event space. Nestled on the eastern side of the Mezzanine Level, natural light soaks in and creates the ideal setting for non-traditional meetings and events.

[Virtual Tour](#)



625 sq. ft.

RECEPTION // 50

BANQUET // 40

THEATER // 50

CONFERENCE // 32

CEILING HEIGHT // 8'4"

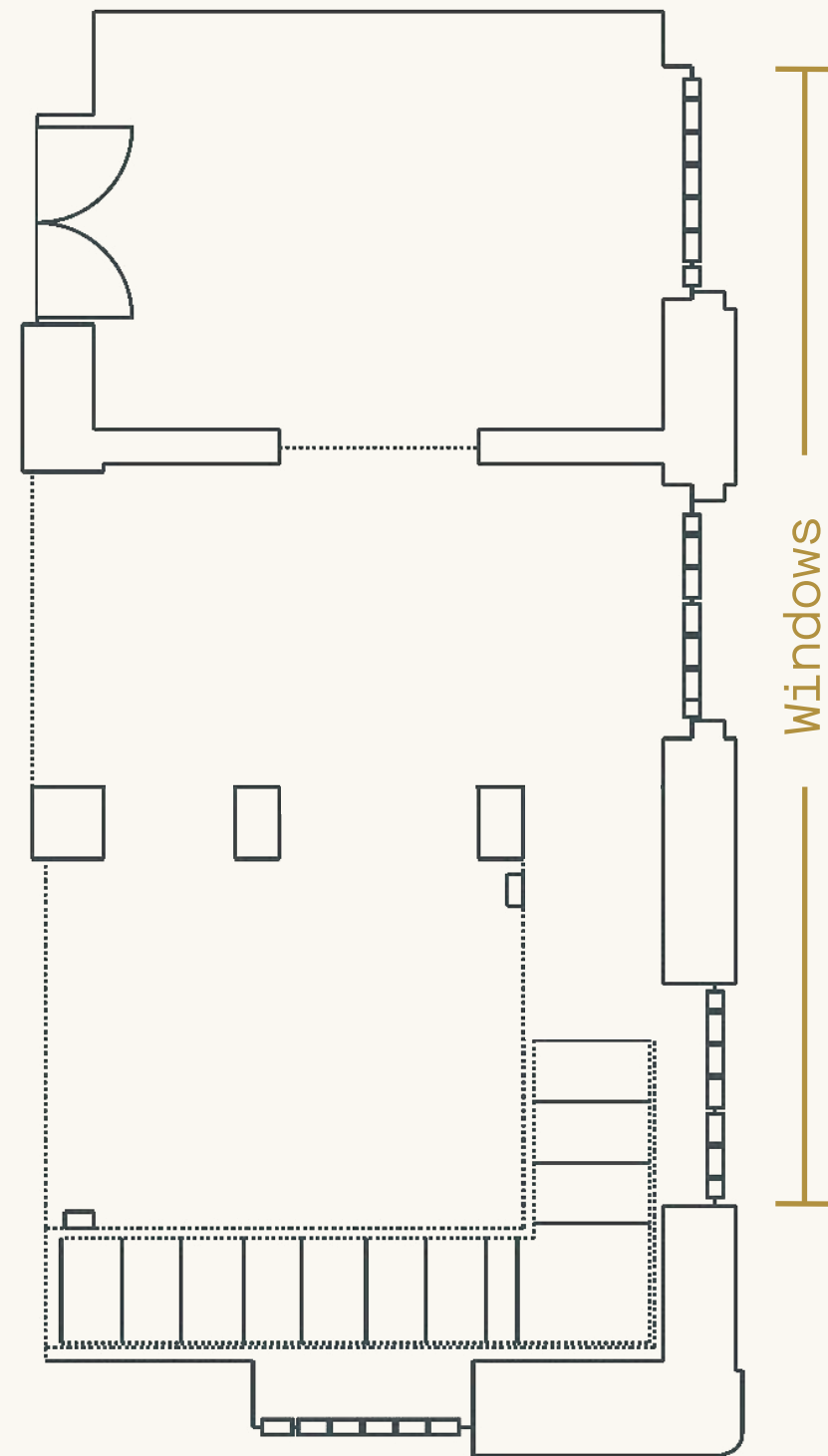




# The Monnette Room & Foyer

The more intimate Monnette, is a charming boardroom with a private foyer, located on the east corner of the mezzanine.

[Virtual Tour](#)



225 sq. ft.

RECEPTION // 30

BANQUET // 12

CEILING HEIGHT // 8'4"

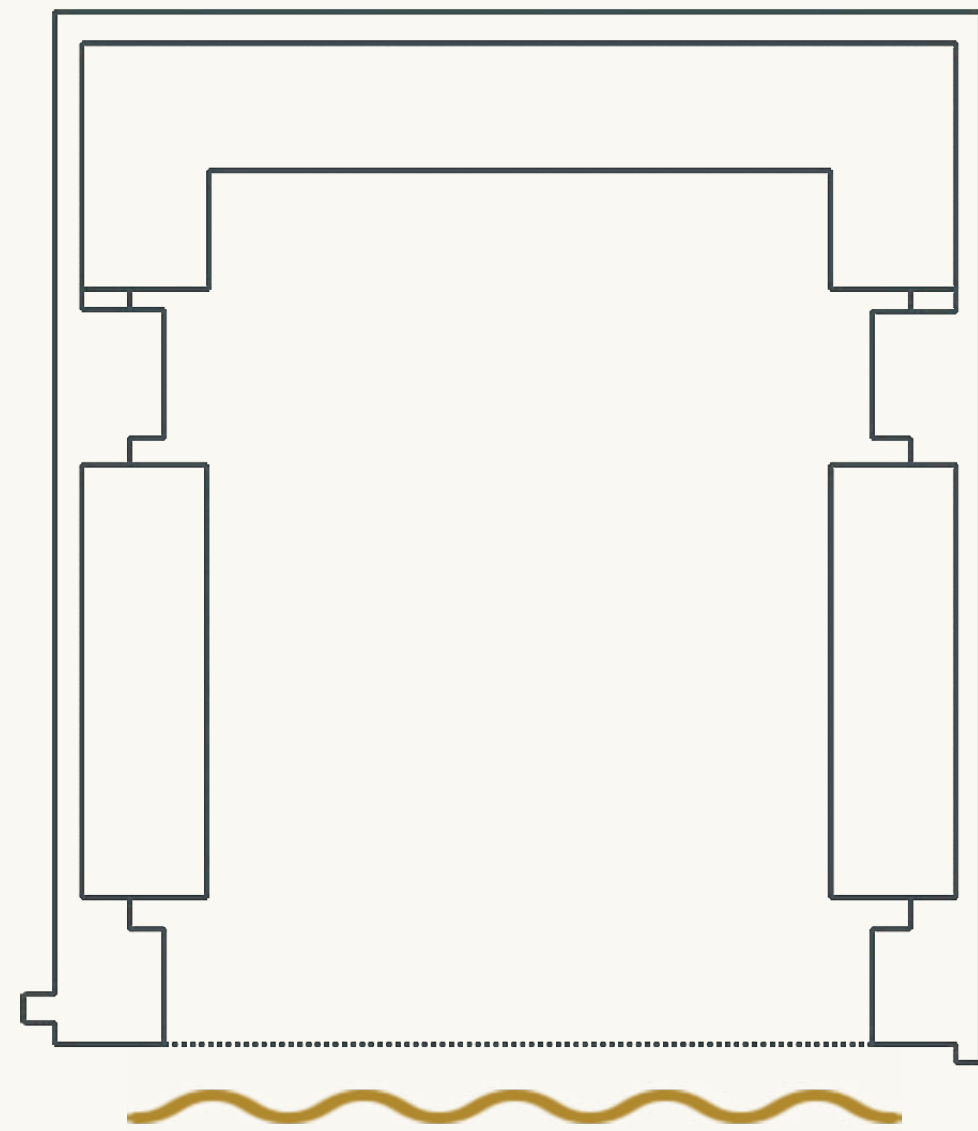




## The Parlour Room

Think a 1920's majestic speakeasy, the Parlour is well-appointed and a showstopper of its own. A private dining space in Per L'Ora Restaurant, ideal for elegant dinners or receptions.

[Virtual Tour](#)



388 sq. ft.

RECEPTION // 35

BANQUET // 26

CEILING HEIGHT // 10'8"

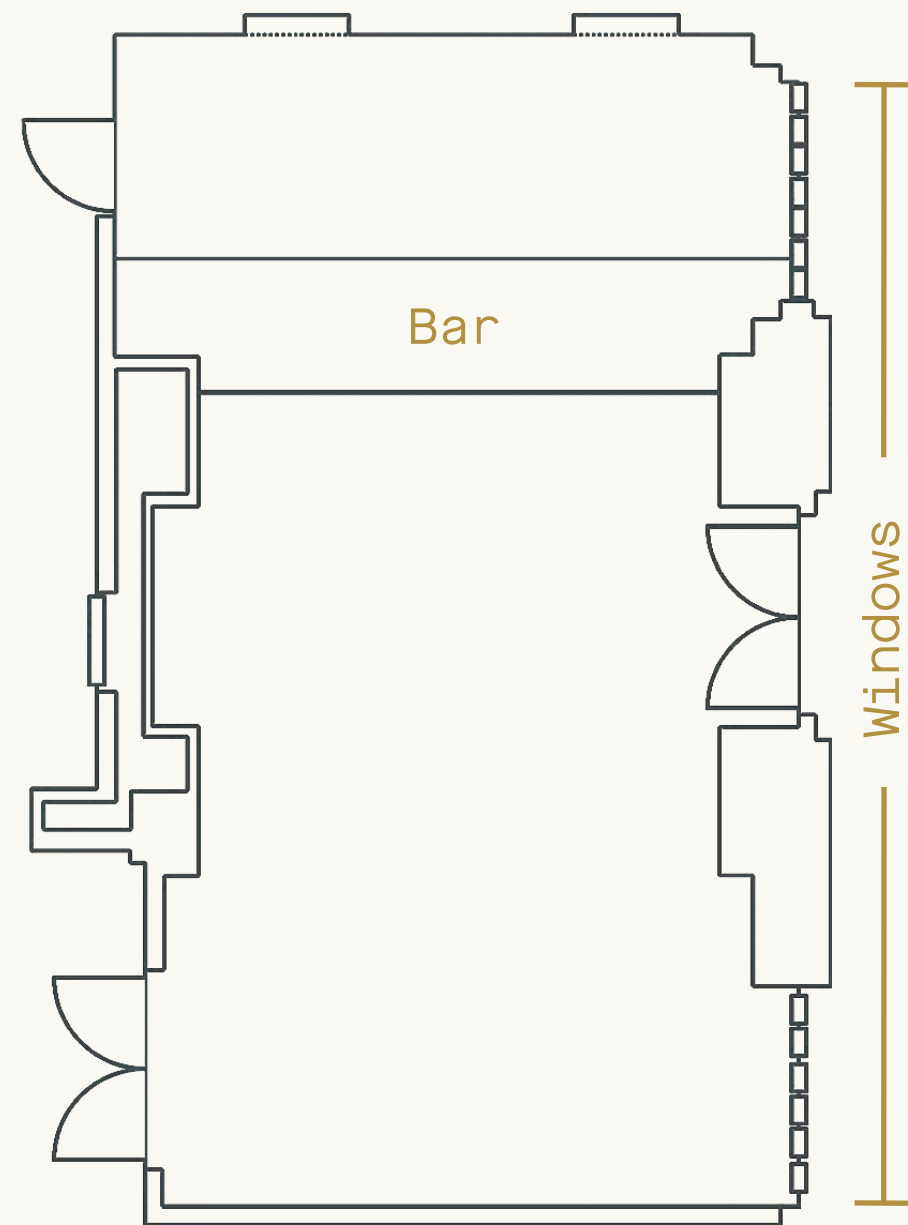




# Café Ora

Mirrored walls, Murano glass chandeliers and white marble flooring – designed exquisitely and ideal for cocktail receptions. Café Ora is a timeless interpretation of the oldest café in the world, Caffè Florian in Venice.

[Virtual Tour](#)



420 sq. ft.

RECEPTION // 45

CEILING HEIGHT // 10'3"

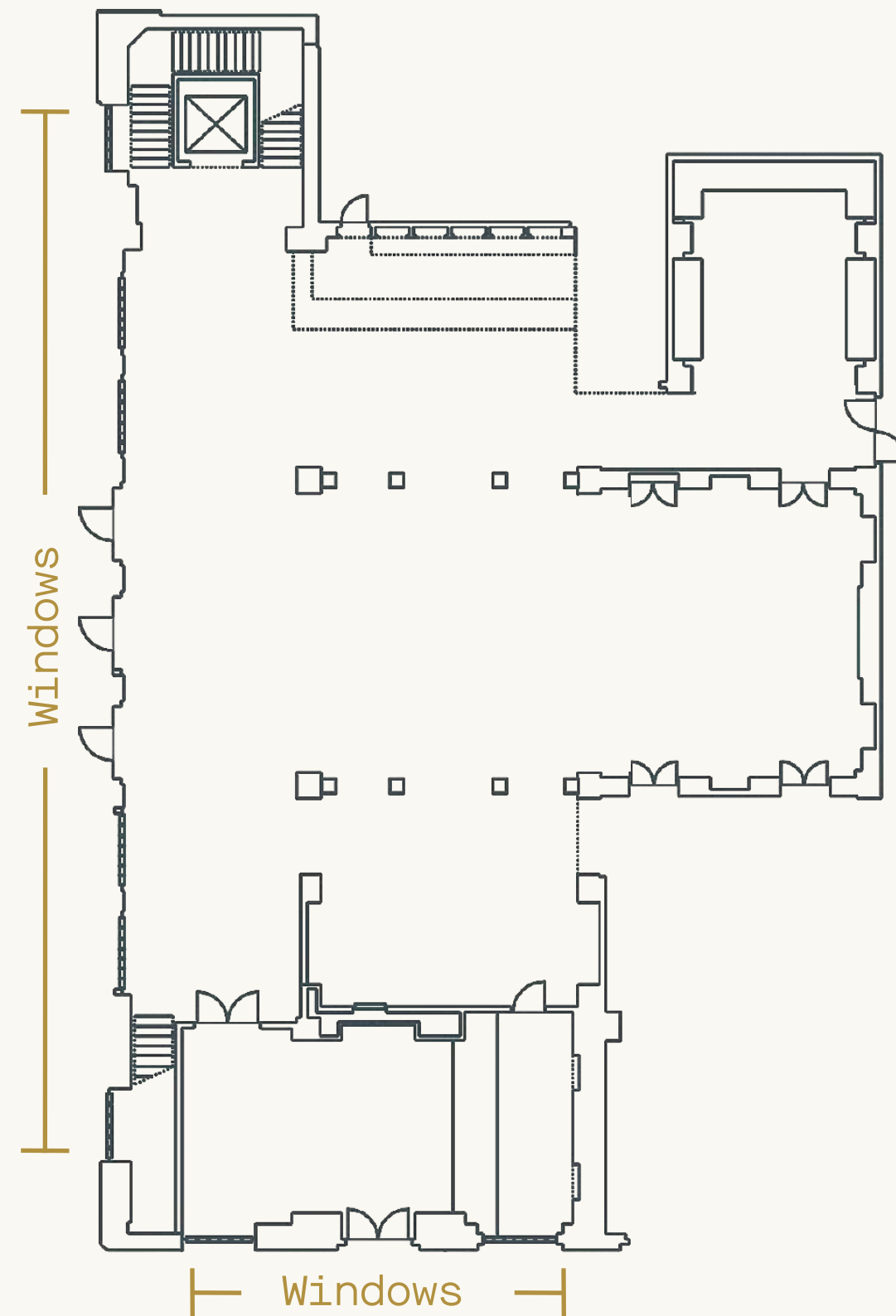




# Per L'Ora Restaurant

Grand and majestic, yet inviting and warm. Per L'Ora is one of the city's best places for bespoke events. Situated in the heart of the hotel, this dynamic event space can accommodate up to 500.

[Virtual Tour](#)



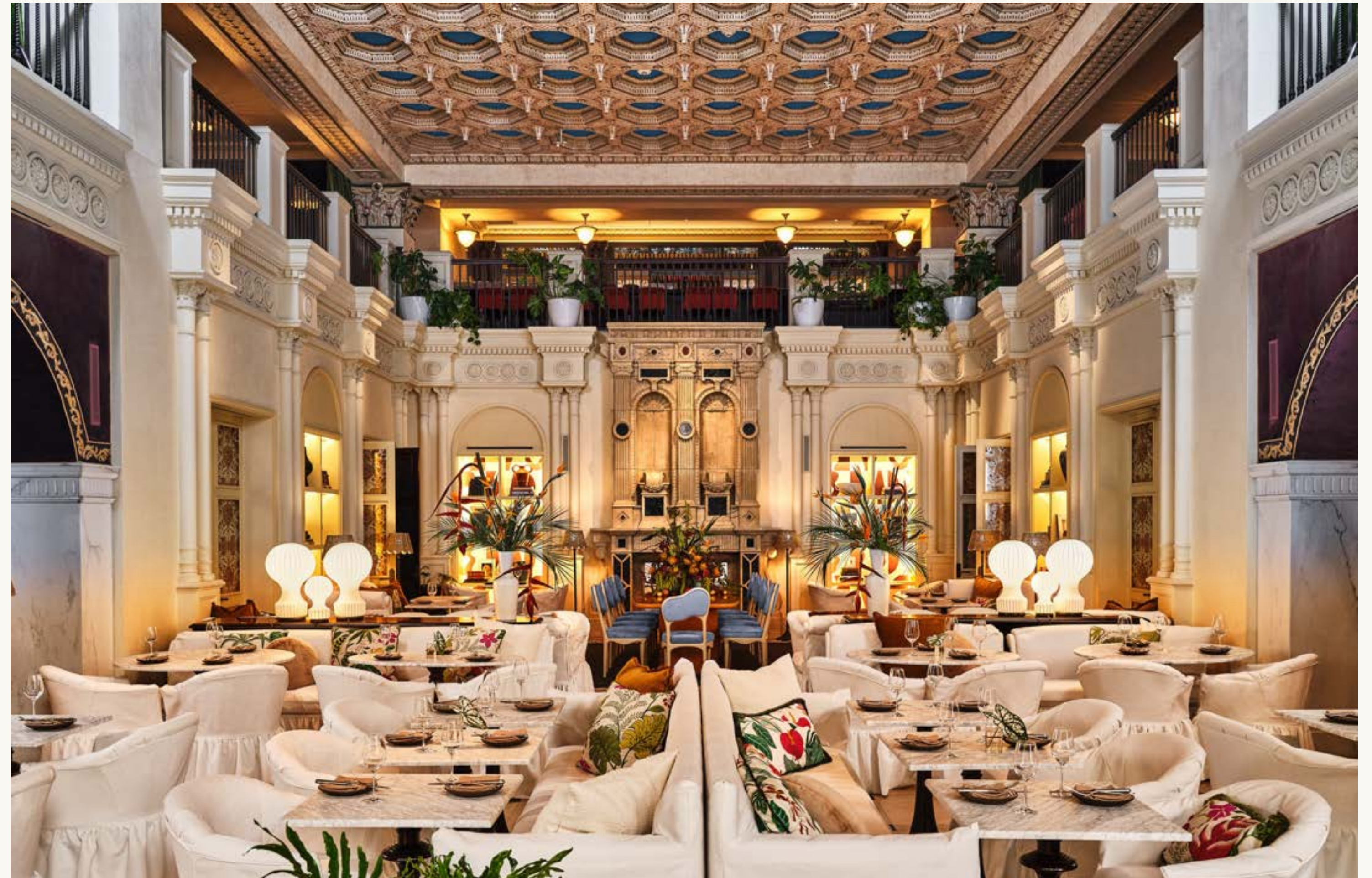
3,430 sq. ft.

RECEPTION // 500

BANQUET // 200

THEATER // 150

CEILING HEIGHT // 22'4"

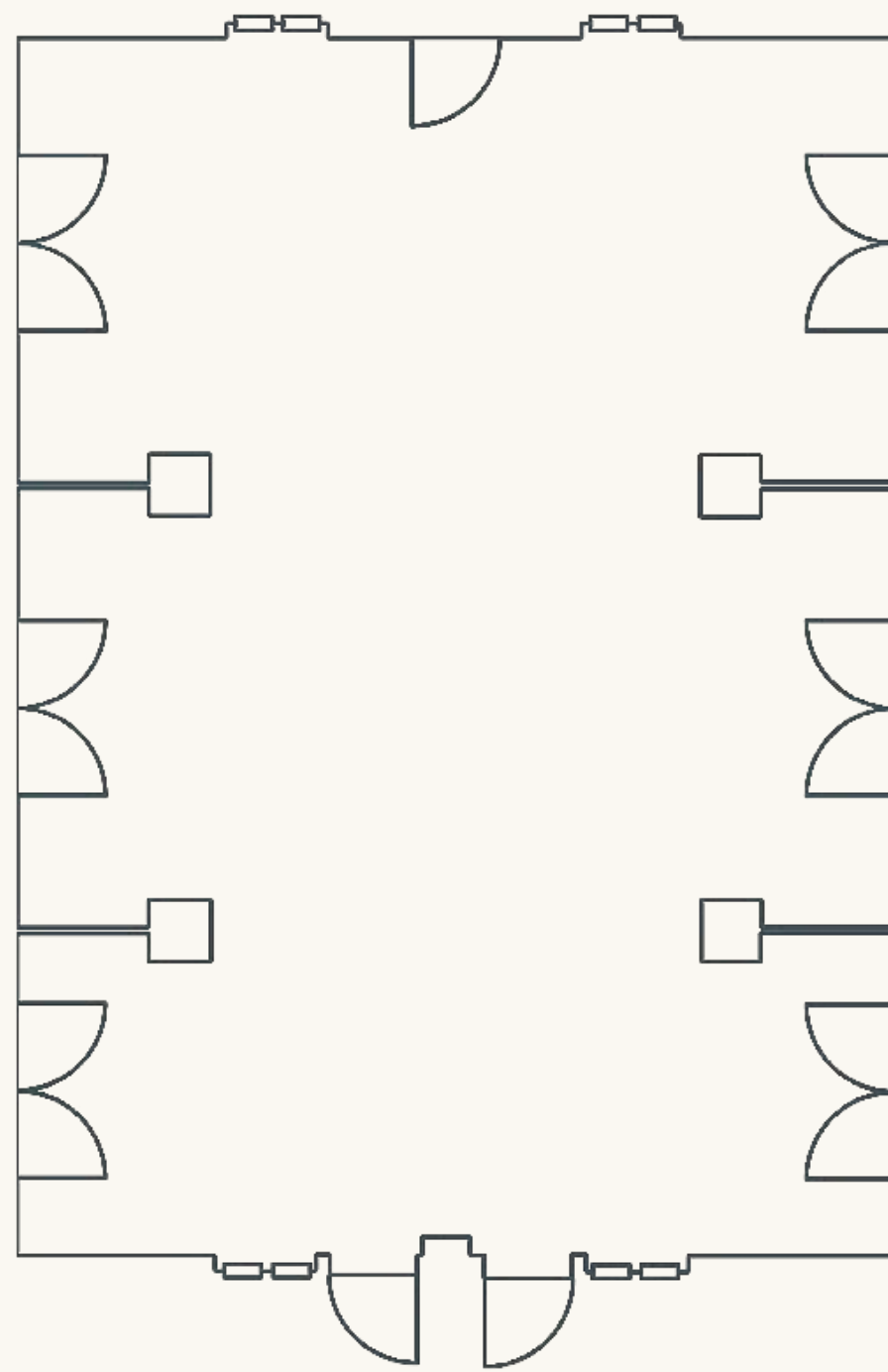




# The Courtyard

Transport your guests to a hidden urban Mediterranean Oasis. Located on the 2<sup>nd</sup> floor of the Hotel, the Courtyard will only be exclusive to your party.

[Virtual Tour](#)



(HAS TO INCLUDE 8 GUEST ROOMS)

1,200 sq. ft.

RECEPTION // 75

BANQUET // 60

THEATER // 70

CLASSROOM // 45

CONFERENCE // 40

CEILING HEIGHT // outdoor

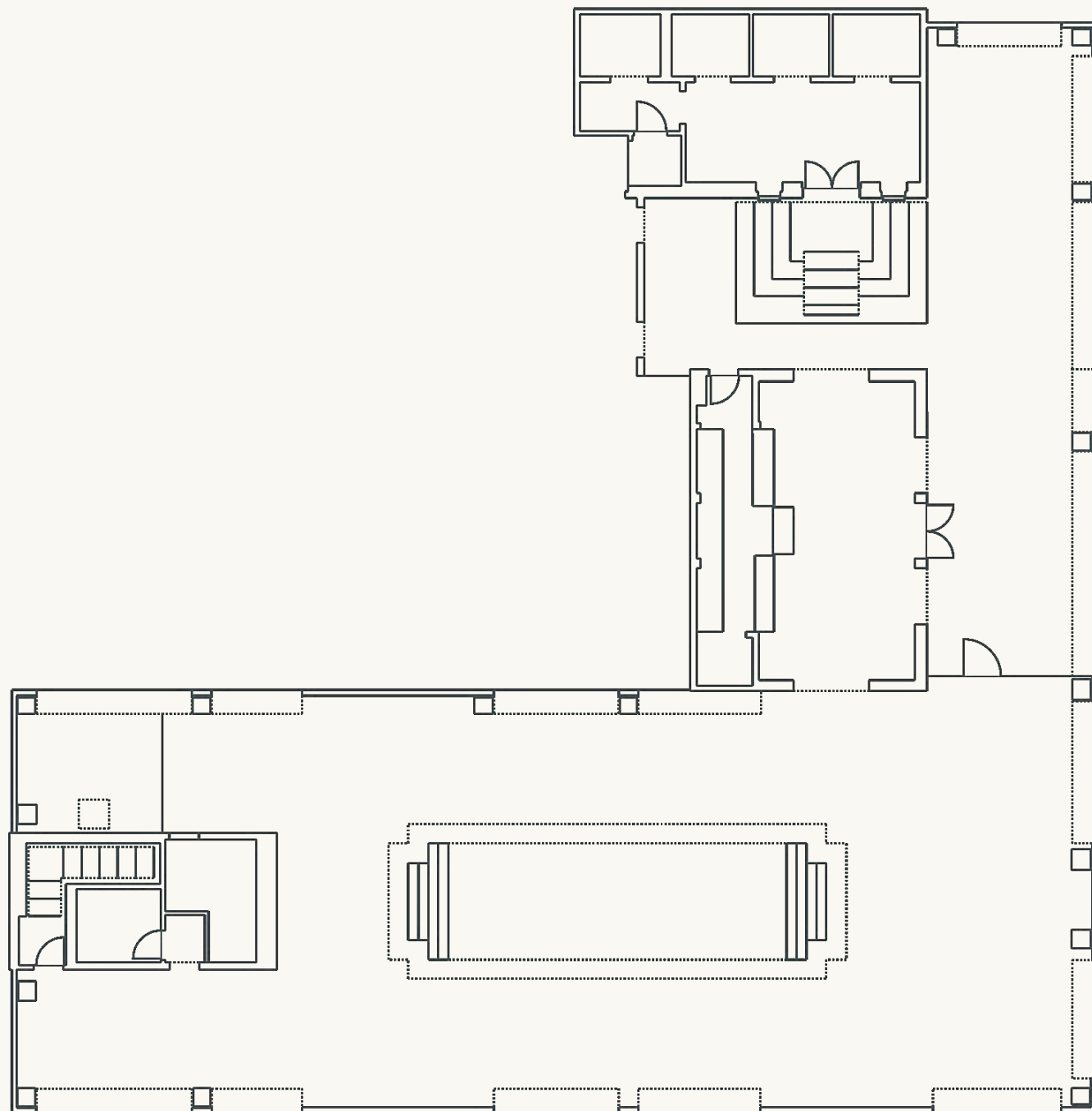




## Rooftop Pool & Bar Clara

Welcome your guests with mesmerizing SoCal sunsets beaming off the vibrant mural wrap created by a local LA Artist. Then light the way as the sunset fades to the fireplace in the iconic replica of 'The Orcus Mouth' in IL Parco dei Monstri located in Bomarzo, Italy.

Celebrating Downtown Los Angeles and rooted in the building's heritage, Rooftop Pool & Bar Clara play together on these elements. The space can accommodate up to 275 with a full buyout.



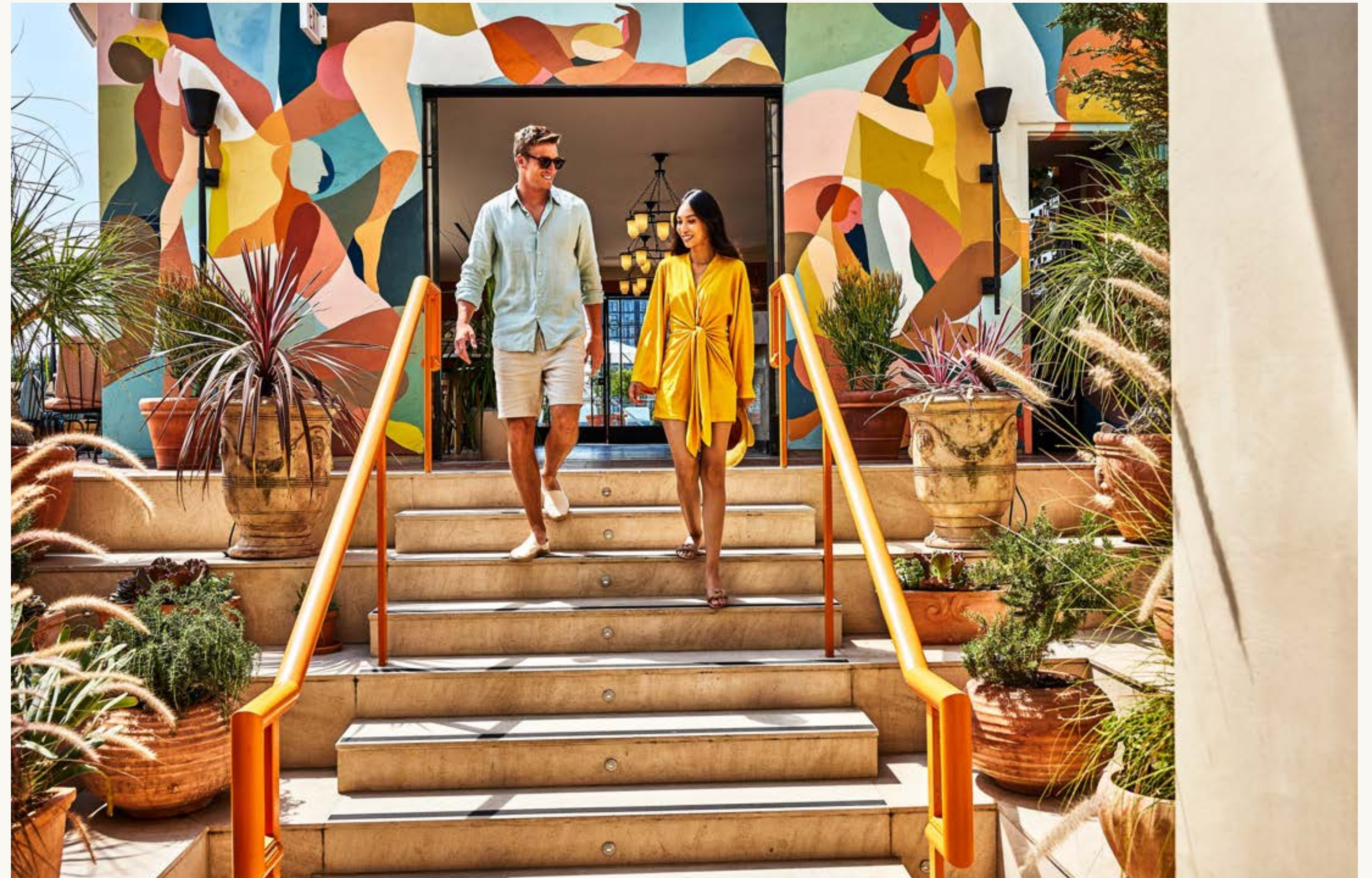
5,530 sq. ft.

RECEPTION // 250

BANQUET // 180

THEATER // 80

CEILING HEIGHT // outside

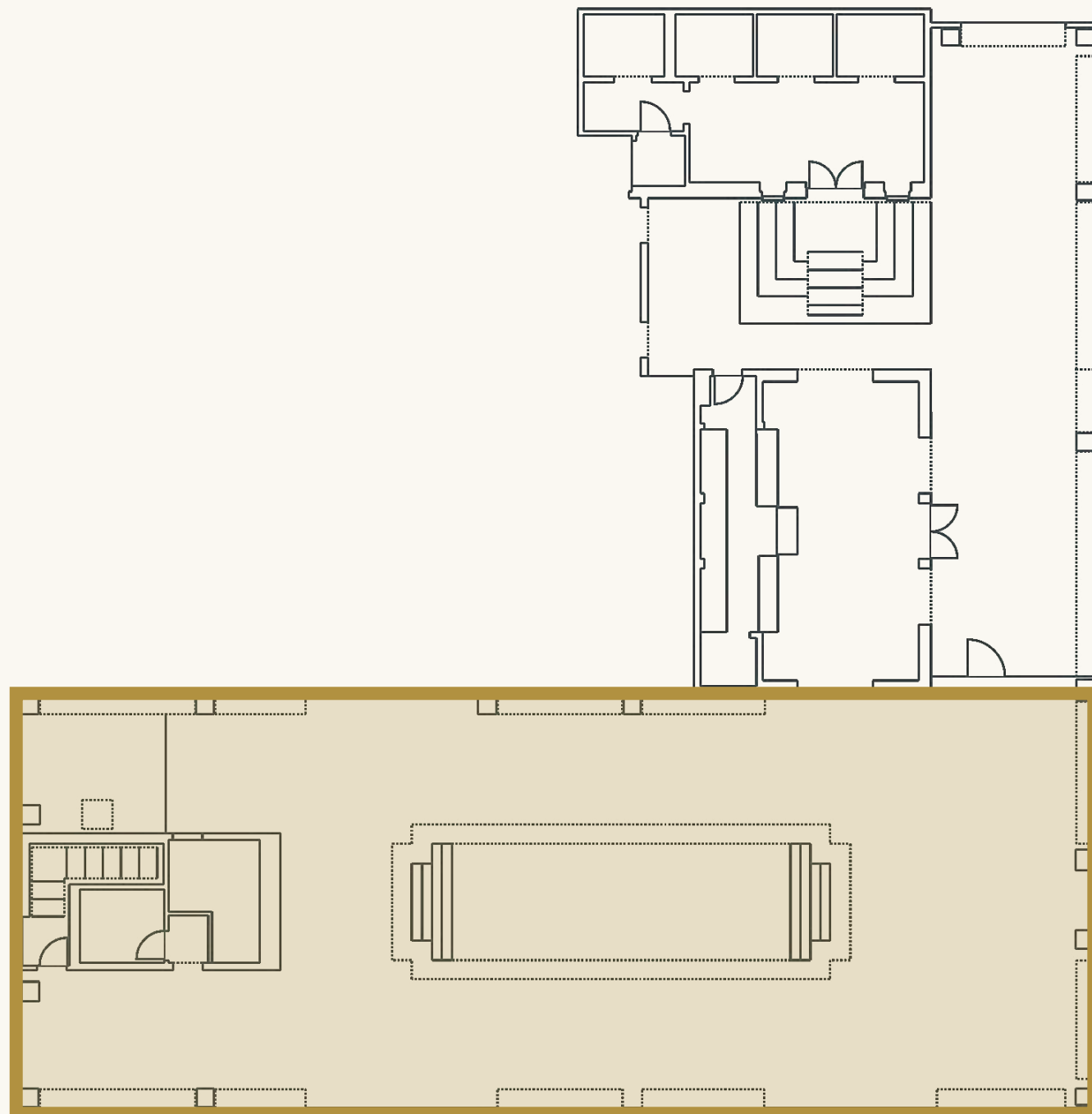




## Rooftop Pool - Full Pool Deck

Sweeping views of the Downtown skyline, the rooftop pool offers the ideal back drop complete with a direct replica sculpture of the Orcus Mouth in Il Parco dei Monstri located in Bomarzo, Italy.

[Virtual Tour](#)



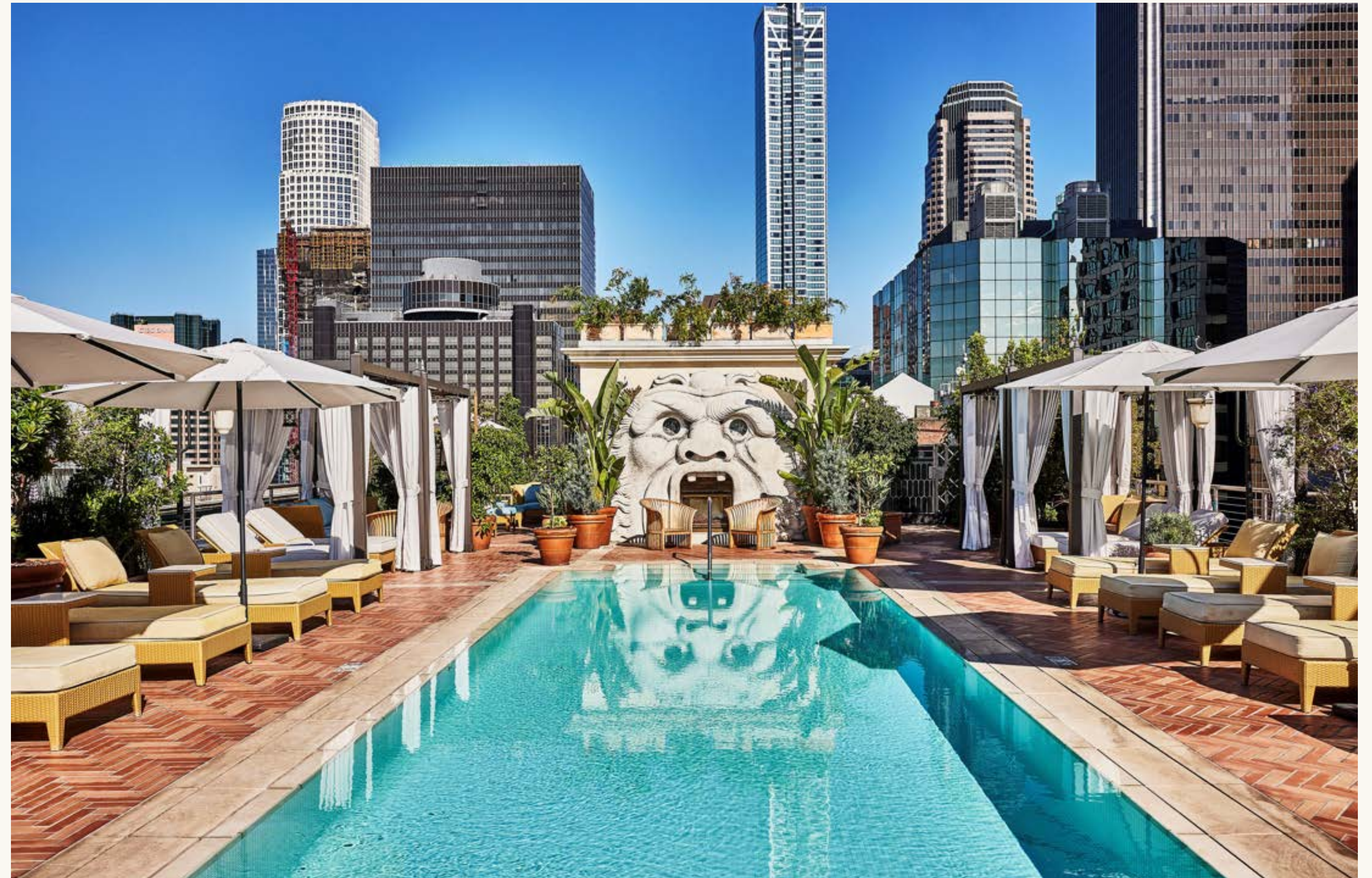
4,170 sq. ft.

RECEPTION // 150

BANQUET // 120

THEATER // 80

CEILING HEIGHT // outside

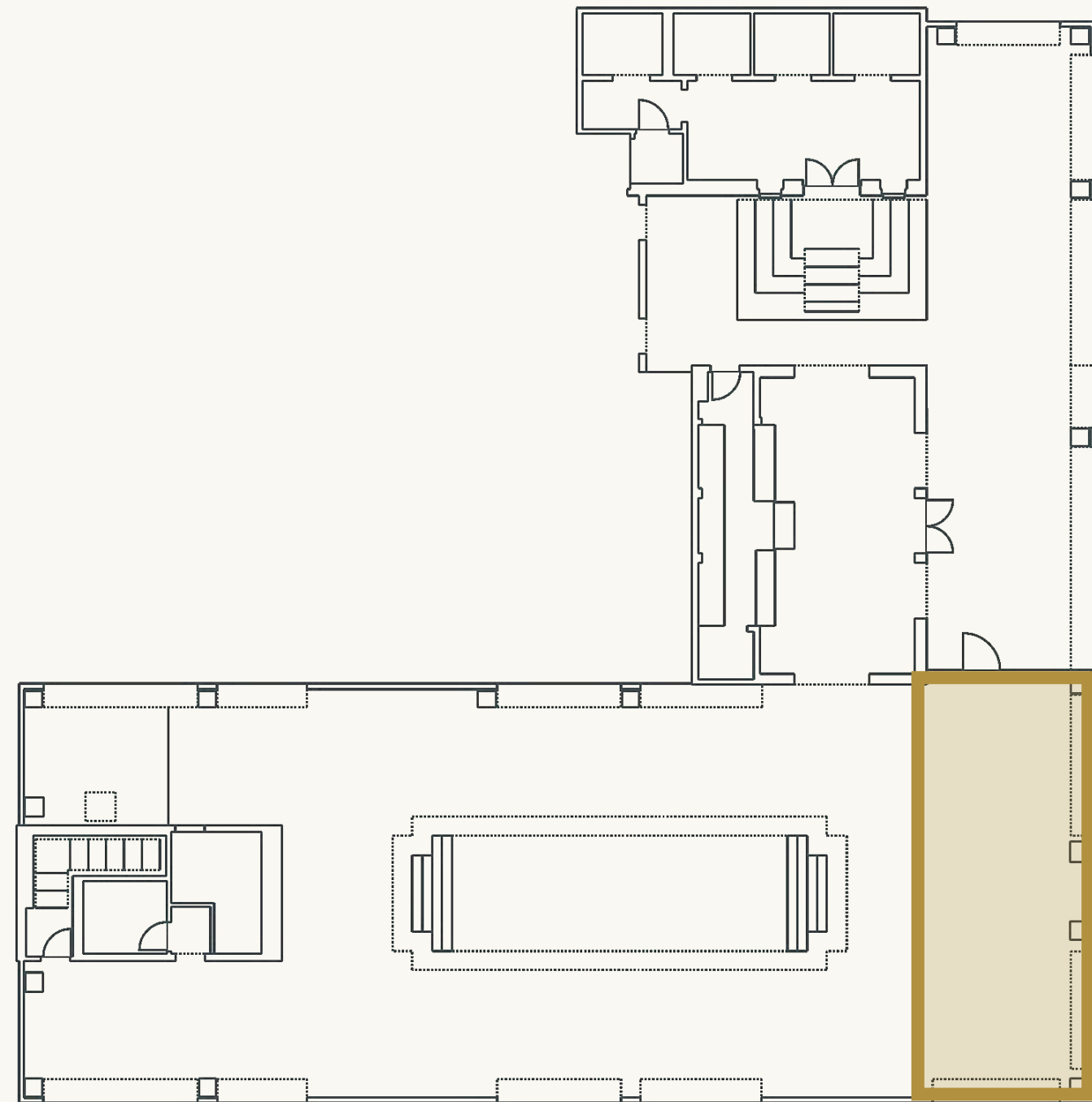




## Rooftop Pool - East

860 sq. ft.

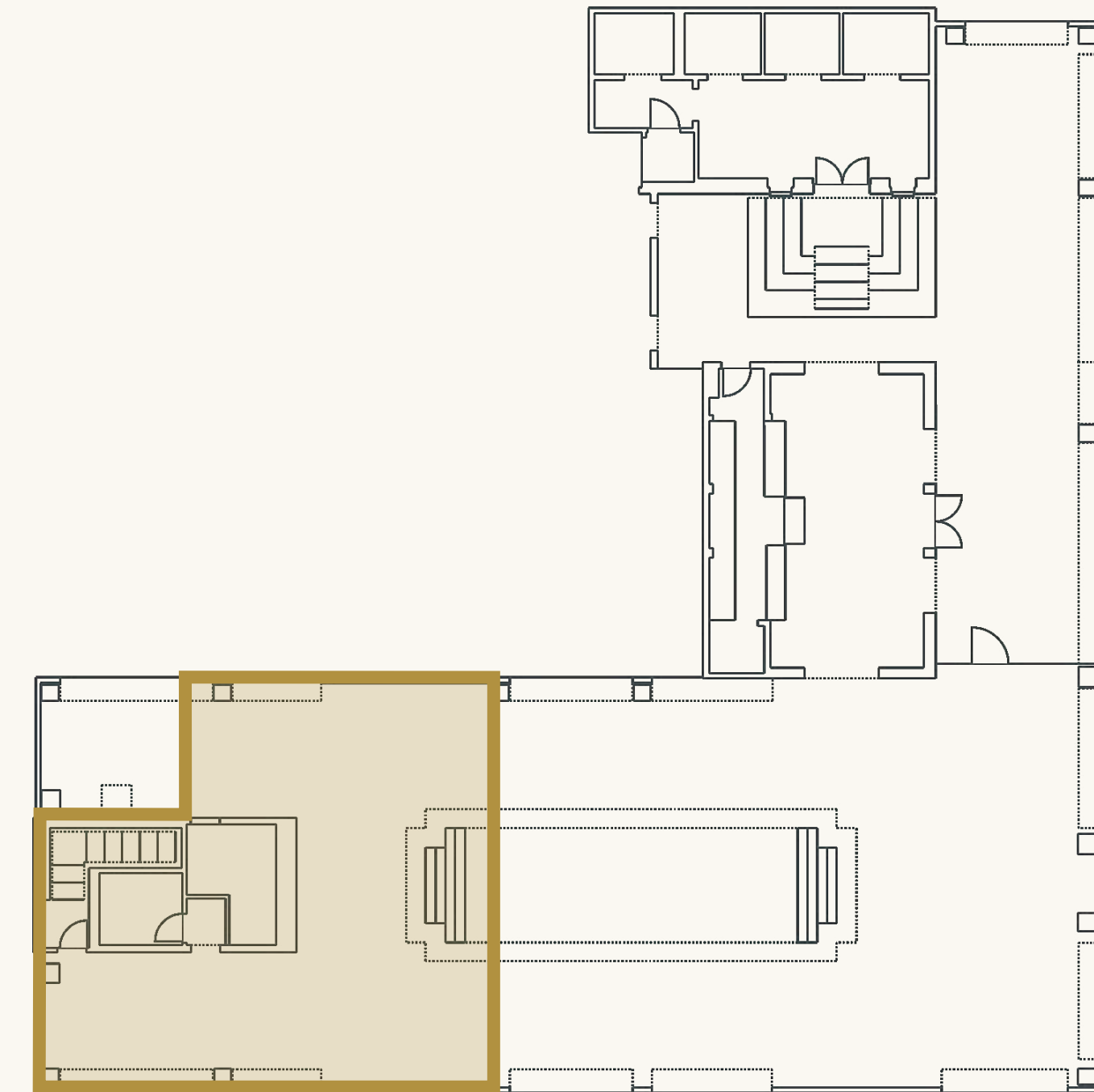
RECEPTION // 80    BANQUET // 60    THEATER // 80    CEILING HEIGHT // outside



## Rooftop Pool – West Cabanas

1,260 sq. ft.

RECEPTION // 40    BANQUET // 24    CEILING HEIGHT // outside

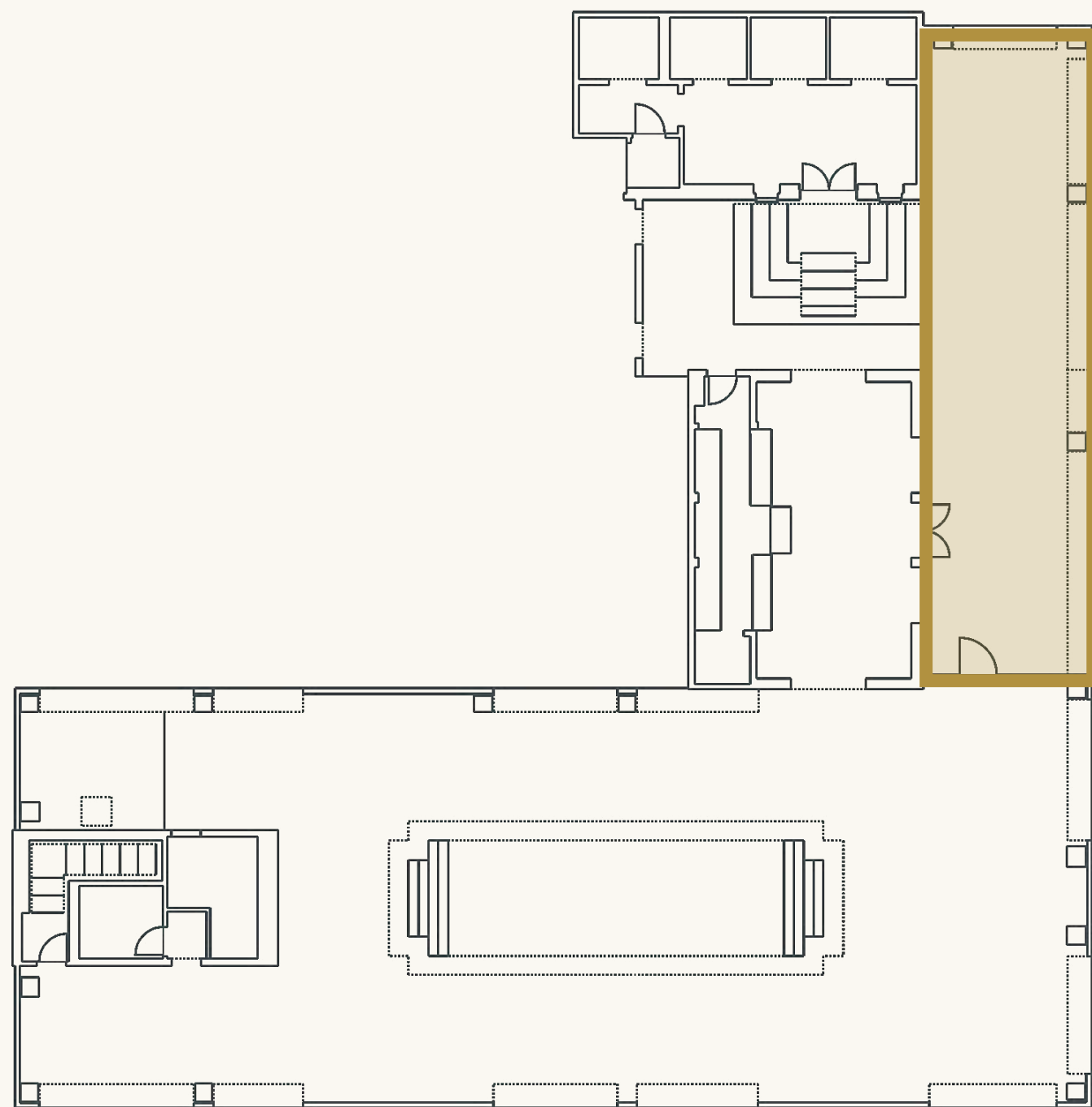




## Bar Clara - Full Patio

Vibrant and lush, Bar Clara is an urban oasis in the Downtown concrete jungle. Private luncheons or evening receptions, this space can accommodate up to 75.

[Virtual Tour](#)



884 sq. ft.

RECEPTION // 75

BANQUET // 54

CEILING HEIGHT // outdoor

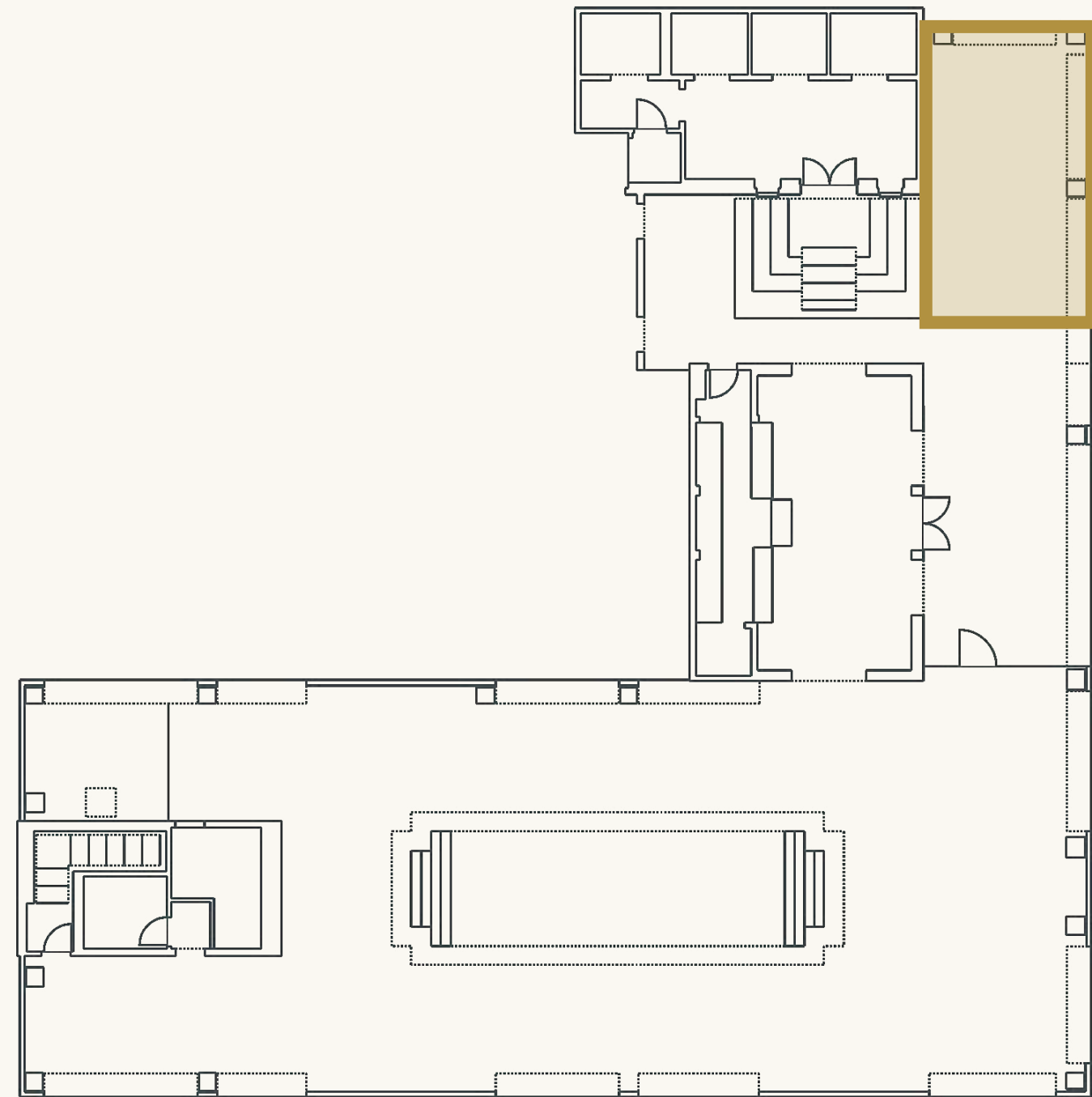




## Bar Clara Cabana

371 sq. ft.

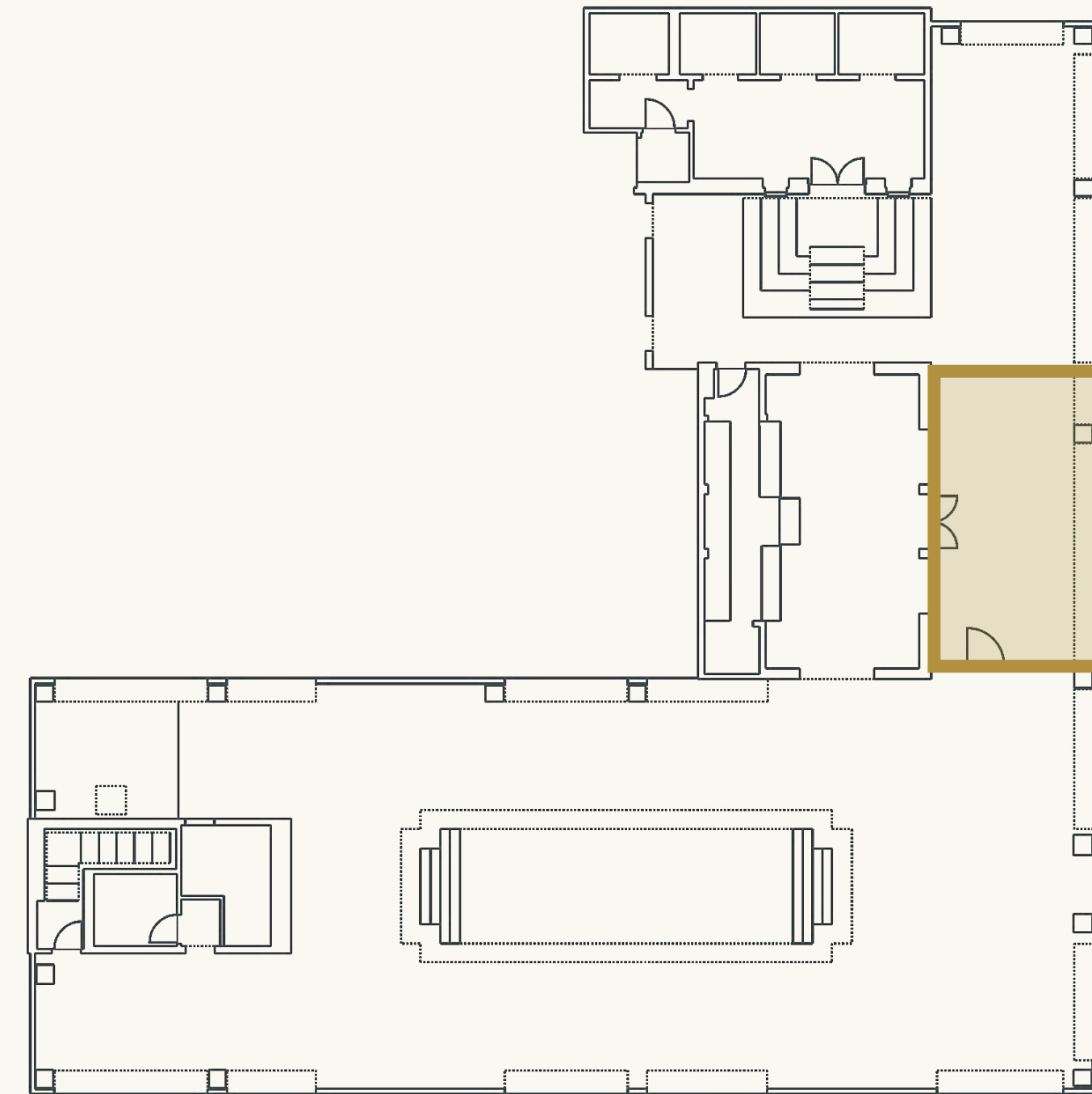
RECEPTION // 30    BANQUET // 24    CEILING HEIGHT // outdoor



## Bar Clara South Patio

440 sq. ft.

RECEPTION // 30    BANQUET // 24    CEILING HEIGHT // outdoor

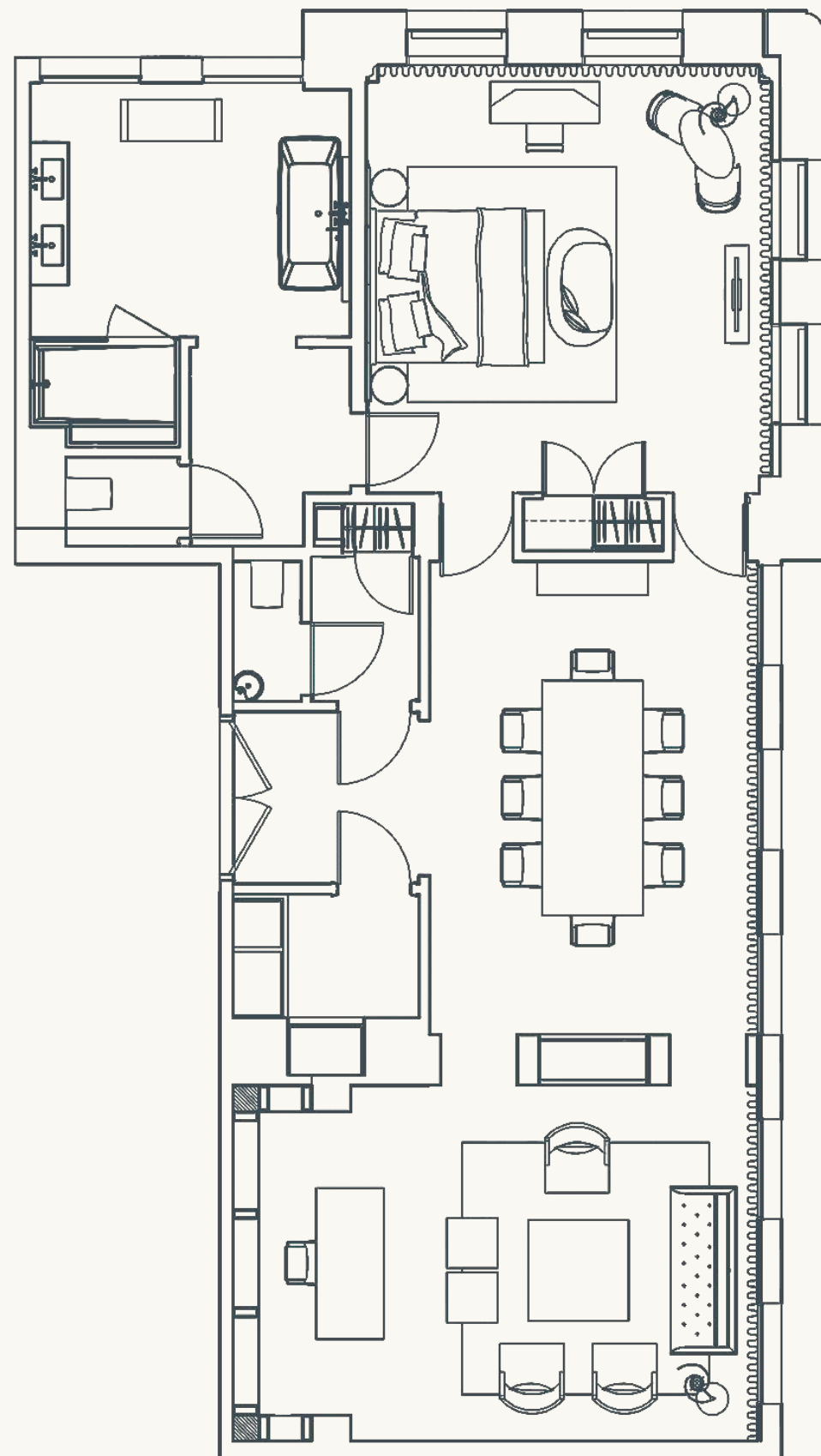




# Amadeo Suite

A grand entrance, abundant space and bright skyline views await in the Amadeo Suite. Board meetings or a cocktail reception, this suite is ideal for those 'C-level' gatherings.

[Virtual Tour](#)



1,300 sq. ft.

RECEPTION // 20

BANQUET // 8

CONFERENCE // 8

CEILING HEIGHT // 10'3"





## EVENT SPACES CAPACITY CHART

| Room  | Dimensions        | Sq Ft | Reception | Banquet | Theater | Crescent | Classroom | Conference | U-Shape |
|---|-------------------|-------|-----------|---------|---------|----------|-----------|------------|---------|
| Mezzanine, Hoffman & Monnette                           | 55 x 57 x 8'4"    | 2,864 | 225       | 160     | —       | —        | —         | —          | —       |
| - Mezzanine ( <i>excluding Hoffman &amp; Monnette</i> ) | 55 x 40 x 8'4"    | 1,826 | 150       | 130     | —       | —        | —         | —          | —       |
| - Mezzanine West or Mezzanine East                      | 55 x 20 x 8'4"    | 913   | 65        | 70      | 56      | —        | 36        | 32         | 30      |
| - Mezzanine East, Hoffman & Monnette                    | 55 x 20 x 8'4"    | 1,763 | 140       | 108     | 56      | —        | 36        | 32         | 30      |
| Hoffman Room  | 13.5 x 33 x 8'4"  | 625   | 40        | 40      | 50      | —        | —         | 28         | 30      |
| Monnette Room & Foyer                                   | 11 x 15 x 8'4"    | 225   | 30        | 12      | —       | —        | —         | 12         | 10      |
| The Parlour   | 18 x 21 x 10'8"   | 388   | 25        | 26      | 20      | —        | —         | 16         | 14      |
| Café Ora  | 24 x 17.5 x 10'3" | 420   | 45        | —       | —       | —        | —         | —          | —       |
| Per L'Ora   | 67 x 61.5 x 22'4" | 3,430 | 250       | 150     | 180     | 98       | 90        | 48         | 46      |
| Full Lobby  | —                 | 7,102 | 600       | 320     | —       | —        | —         | —          | —       |
| The Courtyard   | 41.5 x 30         | 1,200 | 90        | 80      | 70      | —        | 45        | 40         | 38      |
| Rooftop Pool & Bar Clara                                | 105 x 104         | 5,530 | 250       | 180     | 160     | —        | —         | —          | —       |
| - Full Pool Deck  | 40 x 104          | 4,170 | 150       | 100     | 160     | —        | —         | —          | —       |
| - Pool Deck – East                                      | 40 x 21.5         | 860   | 60        | 60      | 80      | —        | —         | —          | —       |
| - Pool Deck - West Cabanas                              | 36.5 x 48         | 1,260 | 40        | —       | —       | —        | —         | —          | —       |
| - Bar Clara – Indoor                                    | 30 x 16           | 476   | 35        | —       | —       | —        | —         | —          | —       |
| - Bar Clara - Full Patio                                | 64 x 14           | 884   | 65        | 50      | —       | —        | —         | —          | —       |
| - Bar Clara Cabana                                      | 26 x 14           | 371   | 25        | —       | 20      | —        | —         | —          | —       |
| - Bar Clara South Patio                                 | 31 x 14           | 440   | 30        | 24      | —       | —        | —         | —          | —       |
| Amadeo Suite  | —                 | 1,300 | 20        | 8       | —       | —        | —         | 8          | —       |



# FAQ

## **CAN WE BRING OUR OWN WINE?**

You may! Please note there is a corkage fee of \$80 ++ per bottle, with a two (2) bottle limit.

## **IS THERE A CAKE CUTTING FEE?**

Yes, charged at \$8 ++ per person.

## **WHAT IS THE FEE AND TAX BREAKDOWN?**

All food, beverage and rental pricing is exclusive of an 25% service fee and 9.5% sales tax. Please note that the service fee is subject to tax.

A predetermined labor fee plus 9.5% sales tax may be added depending on scope and labor requirements of event. Last minute setup changes may also incur a labor fee.

## **DO YOU OFFER DISCOUNTED EVENT PARKING?**

Yes! \$18 + 10% tax per vehicle for the duration of the event (typically, \$18 + tax for the first hour and \$10 for each additional hour).

## **DO YOU OFFER TASTINGS FOR EVENTS?**

We offer tastings of certain plated and family-style dinner menu items for events with a food & beverage minimum of \$20,000++ or greater. Please note, the contract must be signed prior to scheduling the event tasting and tasting date and timing is subject to availability. Not all event menu items are available for tastings.

## **DO YOU ACCOMMODATE DIETARY RESTRICTIONS?**

Yes! Certain menu selections cannot be modified certain ways, so please submit your dietary restrictions along with your menu choices ahead of time. Please note, any dietary needs brought to our attention within 72 hours of the event may not be possible, depending on the request.

## **PRICING FINALIZED**

Pricing is finalized based upon guest count provided 72 hours prior to event. Any guest count reduction after that period will not affect end pricing. We cannot guarantee any guest count additions after the 72-hour mark, menu-wise.

## **ADDITIONAL LABOR REQUIREMENTS**

Certain menu items or requests require additional staffing (i.e., chef attendant, bartender, etc.), which will include labor charges detailed on your BEO, subject to tax.

- Chef Attendant: \$200 per station
- Bartender: \$175 per 50 guests
- Security: \$250 per guard (covers 4 hours)
- Additional Server: \$150 upon request
- Bathroom Attendant: \$150 upon request
- Coat Check Attendant: \$175 upon request

## **SIGNAGE/BRANDING**

Please submit any custom signage or branding requests to our team before your event. Any filming requests must be submitted ahead of time.





649 S Olive St, Los Angeles, CA 90014  
[events@hotelperla.com](mailto:events@hotelperla.com)